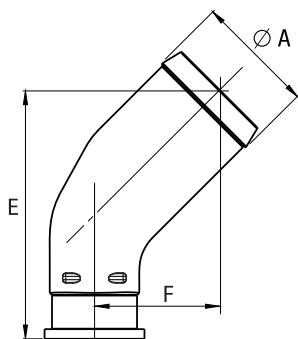


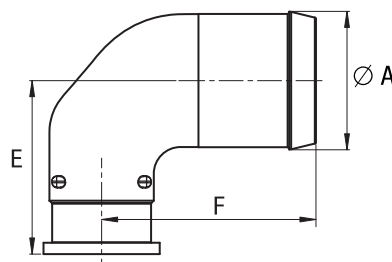
ByPass Valve Inlet Fittings

45° elbow fittings



Reference	Ø hose	Ø A	E	F
17894	1 1/2"	39.1	91.7	46.7
17896	42	43	91.7	46.7
17897	1 3/4"	46	91.7	46.7
17893	2"	51.8	108.4	54.4
17892	2 1/2"	64.5	125.2	62.2

90° elbow fittings

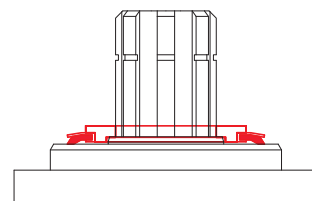


Reference	Ø hose	Ø A	E	F
17947	1 1/2"	39.1	58.6	79.5
17946	2"	51.8	64.9	80.2
17945	2 1/2"	64.5	71.3	87.5

DEFLECTOR TO PROTECT SHAFT SEALS

This deflector ensures the protection of the pump shaft seals.
In particular, it protects the pump from projections of dirt from the road in cardan drive installations.

Reference: **DEF 4111**

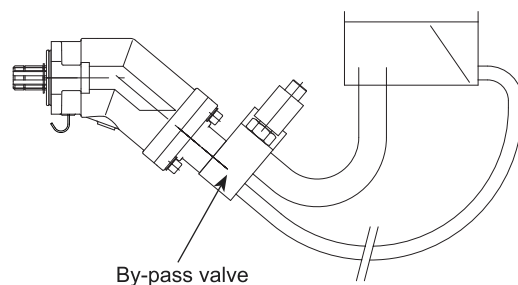


BY-PASS VALVE PUMPS

For pump applications where the pump is driven by a continuous running PTO (PTO which cannot be disengaged), offers a by-pass valve which is fitted onto the back of the pump.

This solution allows the continuous running of the pump:
without creating problems of fluid overheating;
without affecting pump service life;
with no modifications necessary to the hydraulic circuit of the equipment.

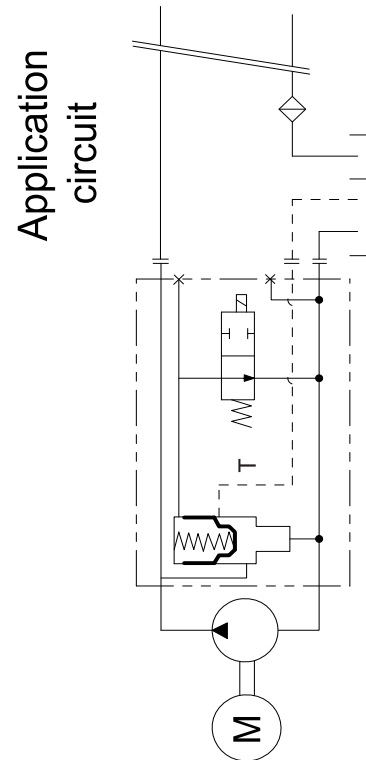
part number	12 Volts	24 Volts
12 to 63	63 05211	63 05179
80 to 130	80 05222	80 05221



ByPass Valve Inlet Fittings

overhang torque with by-pass

Pump reference	Weight		Overhang torque	
	without inlet fitting (kg)	with inlet fitting (kg)	without inlet fitting (N.m)	with inlet fitting (N.m)
12	12.8	13.25	16.32	16.90
18	12.85	13.3	16.39	16.96
25	12.9	13.35	16.44	17.02
32	14.7	15.15	18.98	19.56
41	14.75	15.2	19.04	19.62
50	14.8	15.25	20.05	20.67
63	14.85	15.3	20.12	20.73
80	18.45	18.9	27.16	27.82
108	18.55	19	27.31	27.97
130	18.95	19.4	28.16	28.93



Dimensions with by-pass valve

Pump reference	A	B	C	D	E	F	G	H	J
12 / 18 / 25	289.35	223.04	202.19	132.20	114.72	97.58 3/4"	54	108	
32 / 41	295.5	229	208.3	137.3	120.1	102.7 3/4"	54	108	
50 / 63	307.1	240.4	220	147.1	129.7	112.5 3/4"	54	108	
80 / 108	334	269	246.7	157.8	143.9	124.8 1"	60	123	
130	336.3	271.3	249	159.7	145.8	126.7 1"	60	123.5	

