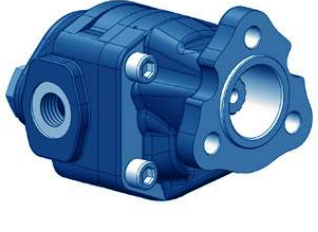

	20 SERIES ISO - 4 BOLTS LEFT AND RIGHT GEAR PUMP						
	Product Number Ürün Numarası	Displacement İletim Hacmi (cm /rev at 1000 rpm)	Max. Pressure Maks.Basınç (bar)	Max.Speed Maks. Hız	Inlet Giriş	Outlet Çıkış	Weight Ağırlık (Kg.)
	GP2006ISOLR	6,10	280	2200	G 1/2"	G 1/2"	6
	GP2010ISOLR	10,20	280	2200	G 1/2"	G 1/2"	6,5
	GP2016ISOLR	16,20	280	2200	G 1/2"	G 1/2"	7
	GP2020ISOLR	20,20	260	2200	G 1/2"	G 1/2"	7,4
	GP2025ISOLR	25,30	220	2200	G 3/4"	G 3/4"	7,6
	GP2032ISOLR	32,30	190	2000	G 3/4"	G 3/4"	8
	GP2040ISOLR	40,10	180	2000	G 3/4"	G 3/4"	8,5

	20 SERIES UNI - 3 BOLTS LEFT AND RIGHT GEAR PUMP						
	Product Number Ürün Numarası	Displacement İletim Hacmi (cm /rev at 1000 rpm)	Max. Pressure Maks.Basınç (bar)	Max.Speed Maks. Hız	Inlet Giriş	Outlet Çıkış	Weight Ağırlık (Kg.)
	GP2006UNILR	6,10	280	2200	G 1/2"	G 1/2"	5
	GP2010UNILR	10,20	280	2200	G 1/2"	G 1/2"	5,5
	GP2016UNILR	16,20	280	2200	G 1/2"	G 1/2"	5,8
	GP2020UNILR	20,20	260	2200	G 1/2"	G 1/2"	6
	GP2025UNILR	25,30	220	2200	G 3/4"	G 3/4"	6,1
	GP2032UNILR	32,30	190	2000	G 3/4"	G 3/4"	6,3
	GP2040UNILR	40,10	180	2000	G 3/4"	G 3/4"	6,5

	20 SERIES IP1 - 4 BOLTS LEFT AND RIGHT GEAR PUMP						
	Product Number Ürün Numarası	Displacement İletim Hacmi (cm /rev at 1000 rpm)	Max. Pressure Maks.Basınç (bar)	Max.Speed Maks. Hız	Inlet Giriş	Outlet Çıkış	Weight Ağırlık (Kg.)
	GP20061P1LR	6,10	280	2200	4020M8	3013M6	5
	GP20101P1LR	10,20	280	2200	4020M8	3013M6	5,5
	GP20161P1LR	16,20	280	2200	4020M8	3013M6	5,8
	GP20201P1LR	20,20	260	2200	4020M8	3013M6	6
	GP20251P1LR	25,30	220	2200	4020M8	3013M6	6,1
	GP20321P1LR	32,30	190	2000	4020M8	3013M6	6,3
	GP20401P1LR	40,10	180	2000	4020M8	3013M6	6,5

30 SERIES ISO LEFT AND RIGHT GEAR PUMP						
Product Number Ürün Numarası	Displacement İletim Hacmi (cm /rev at 1000 rpm)	Max. Pressure Maks.Basınç (bar)	Max.Speed Maks. Hız	Inlet Giriş	Outlet Çıkış	Weight Ağırlık (Kg.)
GP3014ISOLR	14,10	300	2700	G 1/2"	G 1/2"	11
GP3017ISOLR	17,20	300	2700	G 1/2"	G 1/2"	11,5
GP3022ISOLR	22,10	300	2700	G 3/4"	G 1/2"	12
GP3027ISOLR	27,05	300	2700	G 3/4"	G 1/2"	12,5
GP3034ISOLR	34,30	285	2400	G 3/4"	G 3/4"	12,8
GP3038ISOLR	38,10	285	2200	G 3/4"	G 3/4"	13
GP3043ISOLR	43,20	270	2200	G 3/4"	G 3/4"	13,3
GP3051ISOLR	51,60	240	2200	G 1"	G 3/4"	13,5
GP3061ISOLR	61,80	220	1800	G 1"	G 1"	14
GP3067ISOLR	67,40	220	1800	G 1"	G 1"	14,2
GP3073ISOLR	73,10	210	1600	G 1 1/4"	G 1"	14,5
GP3082ISOLR	82,05	200	1500	G 1 1/4"	G 1"	14,7
GP3092ISOLR	92,10	200	1500	G 1 1/4"	G 1"	14,8
GP30100ISOLR	100,20	180	1500	G 1 1/4"	G 1"	15
GP30125ISOLR	125,60	160	1500	G 1 1/4"	G 1"	15,3

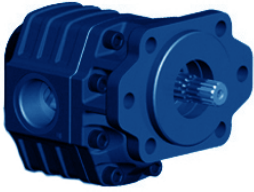


30 SERIES UNI LEFT AND RIGHT GEAR PUMP						
Product Number Ürün Numarası	Displacement İletim Hacmi (cm /rev at 1000 rpm)	Max. Pressure Maks.Basınç (bar)	Max.Speed Maks. Hız	Inlet Giriş	Outlet Çıkış	Weight Ağırlık (Kg.)
GP3014UNILR	14	300	2700	G 1/2"	G 1/2"	8,5
GP3017UNILR	17,20	300	2700	G 1/2"	G 1/2"	9
GP3022UNILR	22,10	300	2700	G 3/4"	G 1/2"	9,5
GP3027UNILR	27,05	300	2700	G 3/4"	G 1/2"	10
GP3034UNILR	34,30	285	2400	G 3/4"	G 3/4"	10,5
GP3038UNILR	38,10	285	2200	G 3/4"	G 3/4"	10,8
GP3043UNILR	43,20	270	2200	G 3/4"	G 3/4"	11
GP3051UNILR	51,60	240	2200	G 1"	G 3/4"	11,5
GP3061UNILR	61,80	220	1800	G 1"	G 1"	12
GP3067UNILR	67,40	220	1800	G 1"	G 1"	12
GP3073UNILR	73,10	210	1600	G 1 1/4"	G 1"	12,5
GP3082UNILR	82,05	200	1500	G 1 1/4"	G 1"	13
GP3092UNILR	92,10	200	1500	G 1 1/4"	G 1"	14,8
GP30100UNILR	100,20	180	1500	G 1 1/4"	G 1"	15
GP30125UNILR	125,60	160	1500	G 1 1/4"	G 1"	15,3

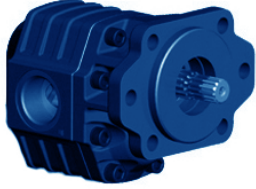



**30 SERIES UNI 22K LEFT AND RIGHT GEAR PUMP**

Product Number Ürün Numarası	Displacement İletim Hacmi (cm /rev at 1000 rpm)	Max. Pressure Maks.Basınç (bar)	Max.Speed Maks. Hız	Inlet Giriş	Outlet Çıkış	Weight Ağırlık (Kg.)
GP3014UNI22KLR	14	300	2700	G 1/2"	G 1/2"	8,5
GP3017UNI22KLR	17,20	300	2700	G 1/2"	G 1/2"	9
GP3022UNI22KLR	22,10	300	2700	G 3/4"	G 1/2"	9,5
GP3027UNI22KLR	27,05	300	2700	G 3/4"	G 1/2"	10
GP3034UNI22KLR	34,30	285	2400	G 3/4"	G 3/4"	10,5
GP3038UNI22KLR	38,10	285	2200	G 3/4"	G 3/4"	10,8
GP3043UNI22KLR	43,20	270	2200	G 3/4"	G 3/4"	11
GP3051UNI22KLR	51,60	240	2200	G 1"	G 3/4"	11,5
GP3061UNI22KLR	61,80	220	1800	G 1"	G 1"	12
GP3067UNI22KLR	67,40	220	1800	G 1"	G 1"	12
GP3073UNI22KLR	73,10	210	1600	G 1 1/4"	G 1"	12,5
GP3082UNI22KLR	82,05	200	1500	G 1 1/4"	G 1"	13
GP3092UNI22KLR	92,10	200	1500	G 1 1/4"	G 1"	14,8
GP30100UNI22KLR	100,20	180	1500	G 1 1/4"	G 1"	15
GP30125UNI22KLR	125,60	160	1500	G 1 1/4"	G 1"	15,3

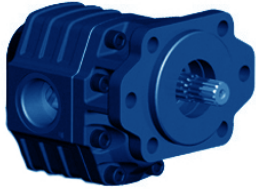

**30 SERIES SAEB13 LEFT AND RIGHT GEAR PUMP**

Product Number Ürün Numarası	Displacement İletim Hacmi (cm /rev at 1000 rpm)	Max. Pressure Maks.Basınç (bar)	Max.Speed Maks. Hız	Inlet Giriş	Outlet Çıkış	Weight Ağırlık (Kg.)
GP3014SAEB13LR	14	300	2700	G 1/2"	G 1/2"	9,5
GP3017SAEB13LR	17,20	300	2700	G 1/2"	G 1/2"	10
GP3022SAEB13LR	22,10	300	2700	G 3/4"	G 1/2"	10,5
GP3027SAEB13LR	27,05	300	2700	G 3/4"	G 1/2"	11
GP3034SAEB13LR	34,30	285	2400	G 3/4"	G 3/4"	11,5
GP3038SAEB13LR	38,10	285	2200	G 3/4"	G 3/4"	11,8
GP3043SAEB13LR	43,20	270	2200	G 3/4"	G 3/4"	12
GP3051SAEB13LR	51,60	240	2200	G 1"	G 3/4"	12,5
GP3061SAEB13LR	61,80	220	1800	G 1"	G 1"	13
GP3067SAEB13LR	67,40	220	1800	G 1"	G 1"	13
GP3073SAEB13LR	73,10	210	1600	G 1 1/4"	G 1"	13,5
GP3082SAEB13LR	82,05	200	1500	G 1 1/4"	G 1"	14,7
GP3092SAEB13LR	92,10	200	1500	G 1 1/4"	G 1"	14,8
GP30100SAEB13LR	100,20	180	1500	G 1 1/4"	G 1"	15
GP30125SAEB13LR	125,60	160	1500	G 1 1/4"	G 1"	15,3



**30 SERIES SAEB15 LEFT AND RIGHT GEAR PUMP**

Product Number Ürün Numarası	Displacement İletim Hacmi (cm /rev at 1000 rpm)	Max. Pressure Maks.Basınç (bar)	Max.Speed Maks. Hız	Inlet Giriş	Outlet Çıkış	Weight Ağırlık (Kg.)
GP3014SAEB15LR	14	300	2700	G 1/2"	G 1/2"	9,5
GP3017SAEB15LR	17,20	300	2700	G 1/2"	G 1/2"	10
GP3022SAEB15LR	22,10	300	2700	G 3/4"	G 1/2"	10,5
GP3027SAEB15LR	27,05	300	2700	G 3/4"	G 1/2"	11
GP3034SAEB15LR	34,30	285	2400	G 3/4"	G 3/4"	11,5
GP3038SAEB15LR	38,10	285	2200	G 3/4"	G 3/4"	11,8
GP3043SAEB15LR	43,20	270	2200	G 3/4"	G 3/4"	12
GP3051SAEB15LR	51,60	240	2200	G 1"	G 3/4"	12,5
GP3061SAEB15LR	61,80	220	1800	G 1"	G 1"	13
GP3067SAEB15LR	67,40	220	1800	G 1"	G 1"	13
GP3073SAEB15LR	73,10	210	1600	G 1 1/4"	G 1"	13,5
GP3082SAEB15LR	82,05	200	1500	G 1 1/4"	G 1"	14,7
GP3092SAEB15LR	92,10	200	1500	G 1 1/4"	G 1"	14,8
GP30100SAEB15LR	100,20	180	1500	G 1 1/4"	G 1"	15
GP30125SAEB15LR	125,60	160	1500	G 1 1/4"	G 1"	15,3



**30 SERIES SAEB22K LEFT AND RIGHT GEAR PUMP**

Product Number Ürün Numarası	Displacement İletim Hacmi (cm /rev at 1000 rpm)	Max. Pressure Maks.Basınç (bar)	Max.Speed Maks. Hız	Inlet Giriş	Outlet Çıkış	Weight Ağırlık (Kg.)
GP3014SAEB22KLR	14	300	2700	G 1/2"	G 1/2"	9,5
GP3017SAEB22KLR	17,20	300	2700	G 1/2"	G 1/2"	10
GP3022SAEB22KLR	22,10	300	2700	G 3/4"	G 1/2"	10,5
GP3027SAEB22KLR	27,05	300	2700	G 3/4"	G 1/2"	11
GP3034SAEB22KLR	34,30	285	2400	G 3/4"	G 3/4"	11,5
GP3038SAEB22KLR	38,10	285	2200	G 3/4"	G 3/4"	11,8
GP3043SAEB22KLR	43,20	270	2200	G 3/4"	G 3/4"	12
GP3051SAEB22KLR	51,60	240	2200	G 1"	G 3/4"	12,5
GP3061SAEB22KLR	61,80	220	1800	G 1"	G 1"	13
GP3067SAEB22KLR	67,40	220	1800	G 1"	G 1"	13
GP3073SAEB22KLR	73,10	210	1600	G 1 1/4"	G 1"	13,5
GP3082SAEB22KLR	82,05	200	1500	G 1 1/4"	G 1"	14,7
GP3092SAEB22KLR	92,10	200	1500	G 1 1/4"	G 1"	14,8
GP30100SAEB22KLR	100,20	180	1500	G 1 1/4"	G 1"	15
GP30125SAEB22KLR	125,60	160	1500	G 1 1/4"	G 1"	15,3


**30 SERIES ISO 13/8 ASAE LEFT AND RIGHT GEAR PUMP**

Product Number Ürün Numarası	Displacement İletim Hacmi (cm /rev at 1000 rpm)	Max. Pressure Maks.Basınç (bar)	Max.Speed Maks. Hız	Inlet Giriş	Outlet Çıkış	Weight Ağırlık (Kg.)
GP3014ASAELR	14	300	2700	G 1/2"	G 1/2"	11
GP3017ASAELR	17,20	300	2700	G 1/2"	G 1/2"	11,5
GP3022ASAELR	22,10	300	2700	G 3/4"	G 1/2"	12
GP3027ASAELR	27,05	300	2700	G 3/4"	G 1/2"	12,5
GP3034ASAELR	34,30	285	2400	G 3/4"	G 3/4"	12,8
GP3038ASAELR	38,10	285	2200	G 3/4"	G 3/4"	13
GP3043ASAELR	43,20	270	2200	G 3/4"	G 3/4"	13,3
GP3051ASAELR	51,60	240	2200	G 1"	G 3/4"	13,5
GP3061ASAELR	61,80	220	1800	G 1"	G 1"	14
GP3067ASAELR	67,40	220	1800	G 1"	G 1"	14,2
GP3073ASAELR	73,10	210	1600	G 1 1/4"	G 1"	14,5
GP3082ASAELR	82,05	200	1500	G 1 1/4"	G 1"	14,7
GP3092ASAELR	92,10	200	1500	G 1 1/4"	G 1"	14,8
GP30100ASAELR	100,20	180	1500	G 1 1/4"	G 1"	15
GP30125ASAELR	125,60	160	1500	G 1 1/4"	G 1"	15,3


**30 SERIES TPK LEFT AND RIGHT GEAR PUMP**

Product Number Ürün Numarası	Displacement İletim Hacmi (cm /rev at 1000 rpm)	Max. Pressure Maks.Basınç (bar)	Max.Speed Maks. Hız	Inlet Giriş	Outlet Çıkış	Weight Ağırlık (Kg.)
GP3022TPKLR	22,10	300	2700	5125M10	4019M8	11
GP3027TPKLR	27,05	300	2700	5125M10	4019M8	11,5
GP3034TPKLR	34,30	285	2400	5125M10	4019M8	12
GP3038TPKLR	38,10	285	2200	5125M10	4019M8	12,5
GP3043TPKLR	43,20	270	2200	5125M10	4019M8	12,8
GP3051TPKLR	51,60	240	2200	5125M10	4019M8	13
GP3061TPKLR	61,60	220	1800	5125M10	4019M8	15,3


**30 SERIES UNI MECHANIC VALVE LEFT AND RIGHT GEAR PUMP**

Product Number Ürün Numarası	Displacement İletim Hacmi (cm /rev at 1000 rpm)	Max. Pressure Maks.Basınç (bar)	Max.Speed Maks. Hız	Inlet Giriş	Outlet Çıkış	Weight Ağırlık (Kg.)
GP3043UNIMVLR	43,20	270	2200	G 3/4"	G 3/4"	13
GP3061UNIMVLR	61,80	220	1800	G 1"	G 1"	14
GP3082UNIMVLR	82,05	200	1500	G 1 1/4"	G 1"	15,7



**30 SERIES ISO BI-DIRECTIONAL GEAR PUMP**

Product Number Ürün Numarası	Displacement İletim Hacmi (cm /rev at 1000 rpm)	Max. Pressure Maks.Basınç (bar)	Max.Speed Maks. Hız	Inlet Giriş	Outlet Çıkış	Weight Ağırlık (Kg.)
GP3014ISOBD	14	300	2700	G 1/2"	G 1/2"	11
GP3017ISOBD	17,20	300	2700	G 1/2"	G 1/2"	11,5
GP3022ISOBD	22,10	300	2700	G 1/2"	G 1/2"	12
GP3027ISOBD	27,05	300	2700	G 1/2"	G 1/2"	12,5
GP3034ISOBD	34,30	285	2400	G 3/4"	G 3/4"	12,8
GP3038ISOBD	38,10	285	2200	G 3/4"	G 3/4"	13
GP3043ISOBD	43,20	270	2200	G 3/4"	G 3/4"	13,3
GP3051ISOBD	51,60	240	2200	G 3/4"	G 3/4"	13,5
GP3061ISOBD	61,80	220	1800	G 1"	G 1"	14
GP3067ISOBD	67,40	220	1800	G 1"	G 1"	14,2
GP3073ISOBD	73,10	210	1600	G 1"	G 1"	14,5
GP3082ISOBD	82,05	200	1500	G 1"	G 1"	14,7
GP3092ISOBD	92,10	200	1500	G 1"	G 1"	14,8
GP30100ISOBD	100,20	180	1500	G 1 1/4"	G 1 1/4"	15
GP30125ISOBD	125,60	160	1500	G 1 1/4"	G 1 1/4"	15,3



**30 SERIES UNI BI-DIRECTIONAL GEAR PUMP**

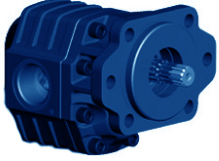
Product Number Ürün Numarası	Displacement İletim Hacmi (cm /rev at 1000 rpm)	Max. Pressure Maks.Basınç (bar)	Max.Speed Maks. Hız	Inlet Giriş	Outlet Çıkış	Weight Ağırlık (Kg.)
GP3014UNIBD	14	300	2700	G 1/2"	G 1/2"	8,5
GP3017UNIBD	17,20	300	2700	G 1/2"	G 1/2"	9
GP3022UNIBD	22,10	300	2700	G 1/2"	G 1/2"	9,5
GP3027UNIBD	27,05	300	2700	G 1/2"	G 1/2"	10
GP3034UNIBD	34,30	285	2400	G 3/4"	G 3/4"	10,5
GP3038UNIBD	38,10	285	2200	G 3/4"	G 3/4"	10,8
GP3043UNIBD	43,20	270	2200	G 3/4"	G 3/4"	11
GP3051UNIBD	51,60	240	2200	G 3/4"	G 3/4"	11,5
GP3061UNIBD	61,80	220	2100	G 1"	G 1"	12
GP3067UNIBD	67,40	220	2100	G 1"	G 1"	12
GP3073UNIBD	73,10	210	2100	G 1"	G 1"	12,5
GP3082UNIBD	82,05	200	1800	G 1"	G 1"	13
GP3092UNIBD	92,10	200	1800	G 1"	G 1"	14,8
GP30100UNIBD	100,20	180	1700	G 1 1/4"	G 1 1/4"	15
GP30125UNIBD	125,60	160	1700	G 1 1/4"	G 1 1/4"	15,3


**30 SERIES UNI22K BI-DIRECTIONAL GEAR PUMP**

Product Number Ürün Numarası	Displacement İletim Hacmi (cm /rev at 1000 rpm)	Max. Pressure Maks.Basınç (bar)	Max.Speed Maks. Hız	Inlet Giriş	Outlet Çıkış	Weight Ağırlık (Kg.)
GP3014UNIKBD	14	300	2700	G 1/2"	G 1/2"	8,5
GP3017UNIKBD	17,20	300	2700	G 1/2"	G 1/2"	9
GP3022UNIKBD	22,10	300	2700	G 1/2"	G 1/2"	9,5
GP3027UNIKBD	27,05	300	2700	G 1/2"	G 1/2"	10
GP3034UNIKBD	34,30	285	2400	G 3/4"	G 3/4"	10,5
GP3038UNIKBD	38,10	285	2200	G 3/4"	G 3/4"	10,8
GP3043UNIKBD	43,20	270	2200	G 3/4"	G 3/4"	11
GP3051UNIKBD	51,60	240	2200	G 3/4"	G 3/4"	11,5
GP3061UNIKBD	61,80	220	1800	G 1"	G 1"	12
GP3067UNIKBD	67,40	220	1800	G 1"	G 1"	12
GP3073UNIKBD	73,10	210	1600	G 1"	G 1"	12,5
GP3082UNIKBD	82,05	200	1500	G 1"	G 1"	13
GP3092UNIKBD	92,10	200	1500	G 1"	G 1"	14,8
GP30100UNIKBD	100,20	180	1500	G 1 1/4"	G 1 1/4"	15
GP30125UNIKBD	125,60	160	1500	G 1 1/4"	G 1 1/4"	15,3


**30 SERIES SAEB13 BI-DIRECTIONAL GEAR PUMP**

Product Number Ürün Numarası	Displacement İletim Hacmi (cm /rev at 1000 rpm)	Max. Pressure Maks.Basınç (bar)	Max.Speed Maks. Hız	Inlet Giriş	Outlet Çıkış	Weight Ağırlık (Kg.)
GP3014SAEB13BD	14	300	2700	G 1/2"	G 1/2"	9,5
GP3017SAEB13BD	17,20	300	2700	G 1/2"	G 1/2"	10
GP3022SAEB13BD	22,10	300	2700	G 1/2"	G 1/2"	10,5
GP3027SAEB13BD	27,05	300	2700	G 1/2"	G 1/2"	11
GP3034SAEB13BD	34,30	285	2400	G 3/4"	G 3/4"	11,5
GP3038SAEB13BD	38,10	285	2200	G 3/4"	G 3/4"	11,8
GP3043SAEB13BD	43,20	270	2200	G 3/4"	G 3/4"	12
GP3051SAEB13BD	51,60	240	2200	G 3/4"	G 3/4"	12,5
GP3061SAEB13BD	61,80	220	1800	G 1"	G 1"	13
GP3067SAEB13BD	67,40	220	1800	G 1"	G 1"	13
GP3073SAEB13BD	73,10	210	1600	G 1"	G 1"	13,5
GP3082SAEB13BD	82,05	200	1500	G 1"	G 1"	14,7
GP3092SAEB13BD	92,10	200	1500	G 1"	G 1"	14,8
GP30100SAEB13BD	100,20	180	1500	G 1 1/4"	G 1 1/4"	15
GP30125SAEB13BD	125,60	160	1500	G 1 1/4"	G 1 1/4"	15,3



**30 SERIES SAEB15 BI-DIRECTIONAL GEAR PUMP**

Product Number Ürün Numarası	Displacement İletim Hacmi (cm /rev at 1000 rpm)	Max. Pressure Maks.Basınç (bar)	Max.Speed Maks. Hız	Inlet Giriş	Outlet Çıkış	Weight Ağırlık (Kg.)
GP3014SAEB15BD	14	300	2700	G 1/2"	G 1/2"	9,5
GP3017SAEB15BD	17,20	300	2700	G 1/2"	G 1/2"	10
GP3022SAEB15BD	22,10	300	2700	G 1/2"	G 1/2"	10,5
GP3027SAEB15BD	27,05	300	2700	G 1/2"	G 1/2"	11
GP3034SAEB15BD	34,30	285	2400	G 3/4"	G 3/4"	11,5
GP3038SAEB15BD	38,10	285	2200	G 3/4"	G 3/4"	11,8
GP3043SAEB15BD	43,20	270	2200	G 3/4"	G 3/4"	12
GP3051SAEB15BD	51,60	240	2200	G 3/4"	G 3/4"	12,5
GP3061SAEB15BD	61,80	220	1800	G 1"	G 1"	13
GP3067SAEB15BD	67,40	220	1800	G 1"	G 1"	13
GP3073SAEB15BD	73,10	210	1600	G 1"	G 1"	13,5
GP3082SAEB15BD	82,05	200	1500	G 1"	G 1"	14,7
GP3092SAEB15BD	92,10	200	1500	G 1"	G 1"	14,8
GP30100SAEB15BD	100,20	180	1500	G 1 1/4"	G 1 1/4"	15
GP30125SAEB15BD	125,60	160	1500	G 1 1/4"	G 1 1/4"	15,3



**30 SERIES SAEB22K BI-DIRECTIONAL GEAR PUMP**

Product Number Ürün Numarası	Displacement İletim Hacmi (cm /rev at 1000 rpm)	Max. Pressure Maks.Basınç (bar)	Max.Speed Maks. Hız	Inlet Giriş	Outlet Çıkış	Weight Ağırlık (Kg.)
GP3014SAEB22KBD	14	300	2700	G 1/2"	G 1/2"	9,5
GP3017SAEB22KBD	17,20	300	2700	G 1/2"	G 1/2"	10
GP3022SAEB22KBD	22,10	300	2700	G 1/2"	G 1/2"	10,5
GP3027SAEB22KBD	27,05	300	2700	G 1/2"	G 1/2"	11
GP3034SAEB22KBD	34,30	285	2400	G 3/4"	G 3/4"	11,5
GP3038SAEB22KBD	38,10	285	2200	G 3/4"	G 3/4"	11,8
GP3043SAEB22KBD	43,20	270	2200	G 3/4"	G 3/4"	12
GP3051SAEB22KBD	51,60	240	2200	G 3/4"	G 3/4"	12,5
GP3061SAEB22KBD	61,80	220	1800	G 1"	G 1"	13
GP3067SAEB22KBD	67,40	220	1800	G 1"	G 1"	13
GP3073SAEB22KBD	73,10	210	1600	G 1"	G 1"	13,5
GP3082SAEB22KBD	82,05	200	1500	G 1"	G 1"	14,7
GP3092SAEB22KBD	92,10	200	1500	G 1"	G 1"	14,8
GP30100SAEB22KBD	100,20	180	1500	G 1 1/4"	G 1 1/4"	15
GP30125SAEB22KBD	125,60	160	1500	G 1 1/4"	G 1 1/4"	15,3




**30 SERIES ISO 1 3/8 ASAE BI-DIRECTIONAL GEAR PUMP**

Product Number Ürün Numarası	Displacement İletim Hacmi (cm /rev at 1000 rpm)	Max. Pressure Maks.Basınç (bar)	Max.Speed Maks. Hız	Inlet Giriş	Outlet Çıkış	Weight Ağırlık (Kg.)
GP3014ASAEBD	14	300	2700	G 1/2"	G 1/2"	11
GP3017ASAEBD	17,20	300	2700	G 1/2"	G 1/2"	11,5
GP3022ASAEBD	22,10	300	2700	G 1/2"	G 1/2"	12
GP3027ASAEBD	27,05	300	2700	G 1/2"	G 1/2"	12,5
GP3034ASAEBD	34,30	285	2400	G 3/4"	G 3/4"	12,8
GP3038ASAEBD	38,10	285	2200	G 3/4"	G 3/4"	13
GP3043ASAEBD	43,20	270	2200	G 3/4"	G 3/4"	13,3
GP3051ASAEBD	51,60	240	2200	G 3/4"	G 3/4"	13,5
GP3061ASAEBD	61,80	220	1800	G 1"	G 1"	14
GP3067ASAEBD	67,40	220	1800	G 1"	G 1"	14,2
GP3073ASAEBD	73,10	210	1600	G 1"	G 1"	14,5
GP3082ASAEBD	82,05	200	1500	G 1"	G 1"	14,7
GP3092ASAEBD	92,10	200	1500	G 1"	G 1"	14,8
GP30100ASAEBD	100,20	180	1500	G 1 1/4"	G 1 1/4"	15
GP30125ASAEBD	125,60	160	1500	G 1 1/4"	G 1 1/4"	15,3


**30 SERIES ISO TANDEM LEFT AND RIGHT GEAR PUMP**

Product Number Ürün Numarası	Displacement İletim Hacmi (cm /rev at 1000 rpm)	Max. Pressure Maks.Basınç (bar)	Max.Speed Maks. Hız	Inlet Giriş	Outlet Çıkış	Weight Ağırlık (Kg.)
GP3017ISOTANLR	17,20	300	2700	G 1/2"	G 1/2"	11,5
GP3022ISOTANLR	22,10	290	2700	G 3/4"	G 1/2"	12
GP3027ISOTANLR	27,05	290	2700	G 3/4"	G 1/2"	12,5
GP3034ISOTANLR	34,30	285	2400	G 3/4"	G 3/4"	12,8
GP3038ISOTANLR	38,10	285	2200	G 3/4"	G 3/4"	13
GP3043ISOTANLR	43,20	280	2200	G 3/4"	G 3/4"	13,3
GP3051ISOTANLR	51,60	240	2200	G 1"	G 3/4"	13,5
GP3061ISOTANLR	61,80	230	1800	G 1"	G 1"	14
GP3067ISOTANLR	67,40	230	1800	G 1"	G 1"	14,2
GP3073ISOTANLR	73,10	210	1600	G 1"	G 1"	14,5
GP3082ISOTANLR	82,05	210	1500	G 1 1/4"	G 1"	14,7
GP3092ISOTANLR	92,10	205	1500	G 1 1/4"	G 1"	15,5

30 SERIES UNI TANDEM LEFT AND RIGHT GEAR PUMP						
Product Number Ürün Numarası	Displacement İletim Hacmi (cm /rev at 1000 rpm)	Max. Pressure Maks.Basınç (bar)	Max.Speed Maks. Hız	Inlet Giriş	Outlet Çıkış	Weight Ağırlık (Kg.)
GP3017UNITANLR	17,20	300	2700	G 1/2"	G 1/2"	11,5
GP3022UNITANLR	22,10	290	2700	G 3/4"	G 1/2"	12
GP3027UNITANLR	27,05	290	2700	G 3/4"	G 1/2"	12,5
GP3034UNITANLR	34,30	285	2400	G 3/4"	G 3/4"	12,8
GP3038UNITANLR	38,10	285	2200	G 3/4"	G 3/4"	13
GP3043UNITANLR	43,20	280	2200	G 3/4"	G 3/4"	13,3
GP3051UNITANLR	51,60	240	2200	G 1"	G 3/4"	13,5
GP3061UNITANLR	61,80	230	1800	G 1"	G 1"	14
GP3067UNITANLR	67,40	230	1800	G 1"	G 1"	14,2
GP3073UNITANLR	73,10	210	1600	G 1 1/4"	G 1"	14,5
GP3082UNITANLR	82,05	210	1500	G 1 1/4"	G 1"	14,7
GP3092UNITANLR	92,10	205	1500	G 1 1/4"	G 1"	15,5

30 SERIES UNI TANDEM22K LEFT AND RIGHT GEAR PUMP						
Product Number Ürün Numarası	Displacement İletim Hacmi (cm /rev at 1000 rpm)	Max. Pressure Maks.Basınç (bar)	Max.Speed Maks. Hız	Inlet Giriş	Outlet Çıkış	Weight Ağırlık (Kg.)
GP3017UNITAN22KLR	17,20	300	2700	G 1/2"	G 1/2"	11,5
GP3022UNITAN22KLR	22,10	290	2700	G 3/4"	G 1/2"	12
GP3027UNITAN22KLR	27,05	290	2700	G 3/4"	G 1/2"	12,5
GP3034UNITAN22KLR	34,30	285	2400	G 3/4"	G 3/4"	12,8
GP3038UNITAN22KLR	38,10	285	2200	G 3/4"	G 3/4"	13
GP3043UNITAN22KLR	43,20	280	2200	G 3/4"	G 3/4"	13,3
GP3051UNITAN22KLR	51,60	240	2200	G 1"	G 3/4"	13,5
GP3061UNITAN22KLR	61,80	230	1800	G 1"	G 1"	14
GP3067UNITAN22KLR	67,40	230	1800	G 1"	G 1"	14,2
GP3073UNITAN22KLR	73,10	210	1600	G 1 1/4"	G 1"	14,5
GP3082UNITAN22KLR	82,05	210	1500	G 1 1/4"	G 1"	14,7
GP3092UNITAN22KLR	92,10	205	1500	G 1 1/4"	G 1"	15,5

30 SERIES SAEB13 TEETH TANDEM LEFT AND RIGHT GEAR PUMP						
Product Number Ürün Numarası	Displacement İletim Hacmi (cm /rev at 1000 rpm)	Max. Pressure Maks.Basınç (bar)	Max.Speed Maks. Hız	Inlet Giriş	Outlet Çıkış	Weight Ağırlık (Kg.)
GP3017SAEB13TANLR	17,20	300	2700	G 1/2"	G 1/2"	11,5
GP3022SAEB13TANLR	22,10	290	2700	G 3/4"	G 1/2"	12
GP3027SAEB13TANLR	27,05	290	2700	G 3/4"	G 1/2"	12,5
GP3034SAEB13TANLR	34,30	285	2400	G 3/4"	G 3/4"	12,8
GP3038SAEB13TANLR	38,10	285	2200	G 3/4"	G 3/4"	13
GP3043SAEB13TANLR	43,20	280	2200	G 3/4"	G 3/4"	13,3
GP3051SAEB13TANLR	51,60	240	2200	G 1"	G 3/4"	13,5
GP3061SAEB13TANLR	61,80	230	1800	G 1"	G 1"	14
GP3067SAEB13TANLR	67,40	230	1800	G 1"	G 1"	14,2
GP3073SAEB13TANLR	73,10	210	1600	G 1 1/4"	G 1"	14,5
GP3082SAEB13TANLR	82,05	210	1500	G 1 1/4"	G 1"	14,7
GP3092SAEB13TANLR	92,10	200	1500	G 1 1/4"	G 1"	15,5


**30 SERIES SAEB15 TEETH TANDEM LEFT AND RIGHT GEAR PUMP**

Product Number Ürün Numarası	Displacement İletim Hacmi (cm /rev at 1000 rpm)	Max. Pressure Maks.Basınç (bar)	Max.Speed Maks. Hız	Inlet Giriş	Outlet Çıkış	Weight Ağırlık (Kg.)
GP3017SAEB15TANLR	17,20	300	2700	G 1/2"	G 1/2"	11,5
GP3022SAEB15TANLR	22,10	290	2700	G 3/4"	G 1/2"	12
GP3027SAEB15TANLR	27,05	290	2700	G 3/4"	G 1/2"	12,5
GP3034SAEB15TANLR	34,30	285	2400	G 3/4"	G 3/4"	12,8
GP3038SAEB15TANLR	38,10	285	2200	G 3/4"	G 3/4"	13
GP3043SAEB15TANLR	43,20	280	2200	G 3/4"	G 3/4"	13,3
GP3051SAEB15TANLR	51,60	240	2200	G 1"	G 3/4"	13,5
GP3061SAEB15TANLR	61,80	230	1800	G 1"	G 1"	14
GP3067SAEB15TANLR	67,40	230	1800	G 1"	G 1"	14,2
GP3073SAEB15TANLR	73,10	210	1600	G 1 1/4"	G 1"	14,5
GP3082SAEB15TANLR	82,05	210	1500	G 1 1/4"	G 1"	14,7
GP3092SAEB15TANLR	92,10	200	1500	G 1 1/4"	G 1"	15,5


**30 SERIES SAEB22 KEY TANDEM LEFT AND RIGHT GEAR PUMP**

Product Number Ürün Numarası	Displacement İletim Hacmi (cm /rev at 1000 rpm)	Max. Pressure Maks.Basınç (bar)	Max.Speed Maks. Hız	Inlet Giriş	Outlet Çıkış	Weight Ağırlık (Kg.)
GP3017UNITAN22KLR	17,20	300	2700	G 1/2"	G 1/2"	11,5
GP3022UNITAN22KLR	22,10	290	2700	G 3/4"	G 1/2"	12
GP3027UNITAN22KLR	27,05	290	2700	G 3/4"	G 1/2"	12,5
GP3034UNITAN22KLR	34,30	285	2400	G 3/4"	G 3/4"	12,8
GP3038UNITAN22KLR	38,10	285	2200	G 3/4"	G 3/4"	13
GP3043UNITAN22KLR	43,20	280	2200	G 3/4"	G 3/4"	13,3
GP3051UNITAN22KLR	51,60	240	2200	G 1"	G 3/4"	13,5
GP3061UNITAN22KLR	61,80	230	1800	G 1"	G 1"	14
GP3067UNITAN22KLR	67,40	230	1800	G 1"	G 1"	14,2
GP3073UNITAN22KLR	73,10	210	1600	G 1 1/4"	G 1"	14,5
GP3082UNITAN22KLR	82,05	210	1500	G 1 1/4"	G 1"	14,7
GP3092UNITAN22KLR	92,10	205	1500	G 1 1/4"	G 1"	15,5


**30 SERIES ISO 1 3/8 ASAE TANDEM LEFT AND RIGHT GEAR PUMP**

Product Number Ürün Numarası	Displacement İletim Hacmi (cm /rev at 1000 rpm)	Max. Pressure Maks.Basınç (bar)	Max.Speed Maks. Hız	Inlet Giriş	Outlet Çıkış	Weight Ağırlık (Kg.)
GP3017ASAETANLR	17,20	300	2700	G 1/2"	G 1/2"	11,5
GP3022ASAETANLR	22,10	290	2700	G 3/4"	G 1/2"	12
GP3027ASAETANLR	27,05	290	2700	G 3/4"	G 1/2"	12,5
GP3034ASAETANLR	34,30	285	2400	G 3/4"	G 3/4"	12,8
GP3038ASAETANLR	38,10	285	2200	G 3/4"	G 3/4"	13
GP3043ASAETANLR	43,20	280	2200	G 3/4"	G 3/4"	13,3
GP3051ASAETANLR	51,60	240	2200	G 1"	G 3/4"	13,5
GP3061ASAETANLR	61,80	230	1800	G 1"	G 1"	14
GP3067ASAETANLR	67,40	230	1800	G 1"	G 1"	14,2
GP3073ASAETANLR	73,10	210	1600	G 1 1/4"	G 1"	14,5
GP3082ASAETANLR	82,05	210	1500	G 1 1/4"	G 1"	14,7
GP3092ASAETANLR	92,10	200	1500	G 1 1/4"	G 1"	15,5



**30 SERIES TPK TANDEM LEFT AND RIGHT GEAR PUMP**

Product Number Ürün Numarası	Displacement İletim Hacmi (cm /rev at 1000 rpm)	Max. Pressure Maks.Basınç (bar)	Max.Speed Maks. Hız	Inlet Giriş	Outlet Çıkış	Weight Ağırlık (Kg.)
GP3022TPK2P1LR	22,10	290	2700	5125M10	4019M8	12
GP3027TPK2P1LR	27,05	290	2700	5125M10	4019M8	12,5
GP3034TPK2P1LR	34,30	285	2400	5125M10	4019M8	12,8
GP3038TPK2P1LR	38,10	285	2200	5125M10	4019M8	13
GP3043TPK2P1LR	43,20	280	2200	5125M10	4019M8	13,3
GP3051TPK2P1LR	51,60	240	2200	5125M10	4019M8	13,5
GP3061TPK2P1LR	61,80	230	2100	5125M10	4019M8	14



**30 SERIES UNI22K TANDEM ADAPTER LEFT AND RIGHT GEAR PUMP**

Product Number Ürün Numarası	Displacement İletim Hacmi (cm /rev at 1000 rpm)	Max. Pressure Maks.Basınç (bar)	Max.Speed Maks. Hız	Inlet Giriş	Outlet Çıkış	Weight Ağırlık (Kg.)
GP3022UNI22KTANADAPLR	22,10	290	2700	5125M10	4019M8	12
GP3027UNI22KTANADAPLR	27,05	290	2700	5125M10	4019M8	12,5
GP3034UNI22KTANADAPLR	34,30	285	2400	5125M10	4019M8	12,8
GP3038UNI22KTANADAPLR	38,10	285	2200	5125M10	4019M8	13
GP3043UNI22KTANADAPLR	43,20	280	2200	5125M10	4019M8	13,3
GP3051UNI22KTANADAPLR	51,60	240	2200	5125M10	4019M8	13,5
GP3061UNI22KTANADAPLR	61,80	230	2100	5125M10	4019M8	14



**30 SERIES SAEB13 TEETH TANDEM ADAPTER LEFT AND RIGHT**

Product Number Ürün Numarası	Displacement İletim Hacmi (cm /rev at 1000 rpm)	Max. Pressure Maks.Basınç (bar)	Max.Speed Maks. Hız	Inlet Giriş	Outlet Çıkış	Weight Ağırlık (Kg.)
GP3022SAEB13TANADAPLR	22,10	290	2700	5125M10	4019M8	12
GP3027SAEB13TANADAPLR	27,05	290	2700	5125M10	4019M8	12,5
GP3034SAEB13TANADAPLR	34,30	285	2400	5125M10	4019M8	12,8
GP3038SAEB13TANADAPLR	38,10	285	2200	5125M10	4019M8	13
GP3043SAEB13TANADAPLR	43,20	280	2200	5125M10	4019M8	13,3
GP3051SAEB13TANADAPLR	51,60	240	2200	5125M10	4019M8	13,5
GP3061SAEB13TANADAPLR	61,80	230	2100	5125M10	4019M8	14



**30 SERIES SAEB15 TEETH TANDEM ADAPTER LEFT AND RIGHT**

Product Number Ürün Numarası	Displacement İletim Hacmi (cm /rev at 1000 rpm)	Max. Pressure Maks.Basınç (bar)	Max.Speed Maks. Hız	Inlet Giriş	Outlet Çıkış	Weight Ağırlık (Kg.)
GP3022SAEB15TANADAPLR	22,10	290	2700	5125M10	4019M8	12
GP3027SAEB15TANADAPLR	27,05	290	2700	5125M10	4019M8	12,5
GP3034SAEB15TANADAPLR	34,30	285	2400	5125M10	4019M8	12,8
GP3038SAEB15TANADAPLR	38,10	285	2200	5125M10	4019M8	13
GP3043SAEB15TANADAPLR	43,20	280	2200	5125M10	4019M8	13,3
GP3051SAEB15TANADAPLR	51,60	240	2200	5125M10	4019M8	13,5
GP3061SAEB15TANADAPLR	61,80	230	2100	5125M10	4019M8	14


**30 SERIES SAEB22KEY TANDEM ADAPTER LEFT AND RIGHT**

Product Number Ürün Numarası	Displacement İletim Hacmi (cm /rev at 1000 rpm)	Max. Pressure Maks.Basınç (bar)	Max.Speed Maks. Hız	Inlet Giriş	Outlet Çıkış	Weight Ağırlık (Kg.)
GP3022SAEB22KTANADAPLR	22,10	290	2700	5125M10	4019M8	12
GP3027SAEB22KTANADAPLR	27,05	290	2700	5125M10	4019M8	12,5
GP3034SAEB22KTANADAPLR	34,30	285	2400	5125M10	4019M8	12,8
GP3038SAEB22KTANADAPLR	38,10	285	2200	5125M10	4019M8	13
GP3043SAEB22KTANADAPLR	43,20	280	2200	5125M10	4019M8	13,3
GP3051SAEB22KTANADAPLR	51,60	240	2200	5125M10	4019M8	13,5
GP3061SAEB22KTANADAPLR	61,80	230	2100	5125M10	4019M8	14


**30 SERIES UNI HIDROMOTOR BI-DIRECTIONAL GEAR PUMP**

Product Number Ürün Numarası	Displacement İletim Hacmi (cm /rev at 1000 rpm)	Max. Pressure Maks.Basınç (bar)	Max.Speed Maks. Hız	Inlet Giriş	Outlet Çıkış	Weight Ağırlık (Kg.)
GP3014UNIHMBD	14	300	2700	G 1/2"	G 1/2"	8,5
GP3017UNIHMBD	17,20	300	2700	G 1/2"	G 1/2"	9
GP3022UNIHMBD	22,10	300	2700	G 1/2"	G 1/2"	9,5
GP3027UNIHMBD	27,05	300	2700	G 1/2"	G 1/2"	10
GP3034UNIHMBD	34,30	285	2400	G 3/4"	G 3/4"	10,5
GP3038UNIHMBD	38,10	285	2200	G 3/4"	G 3/4"	10,8
GP3043UNIHMBD	43,20	270	2200	G 3/4"	G 3/4"	11
GP3051UNIHMBD	51,60	240	2200	G 3/4"	G 3/4"	11,5
GP3061UNIHMBD	61,80	220	1800	G 1"	G 1"	12
GP3067UNIHMBD	67,40	220	1800	G 1"	G 1"	12
GP3073UNIHMBD	73,10	210	1600	G 1"	G 1"	12,5
GP3082UNIHMBD	82,05	200	1500	G 1"	G 1"	13
GP3092UNIHMBD	92,10	200	1500	G 1"	G 1"	14,8
GP30100UNIHMBD	100,20	180	1500	G 1 1/4"	G 1 1/4"	15
GP30125UNIHMBD	125,60	160	1500	G 1 1/4"	G 1 1/4"	15,3


**30 SERIES SAEB BI-DIRECTIONAL GEAR PUMP**

Product Number Ürün Numarası	Displacement İletim Hacmi (cm /rev at 1000 rpm)	Max. Pressure Maks.Basınç (bar)	Max.Speed Maks. Hız	Inlet Giriş	Outlet Çıkış	Weight Ağırlık (Kg.)
GP3014SAEBBD	14	300	2700	G 1/2"	G 1/2"	9,5
GP3017SAEBBD	17,20	300	2700	G 1/2"	G 1/2"	10
GP3022SAEBBD	22,10	300	2700	G 1/2"	G 1/2"	10,5
GP3027SAEBBD	27,05	300	2700	G 1/2"	G 1/2"	11
GP3034SAEBBD	34,30	285	2400	G 3/4"	G 3/4"	11,5
GP3038SAEBBD	38,10	285	2200	G 3/4"	G 3/4"	11,8
GP3043SAEBBD	43,20	270	2200	G 3/4"	G 3/4"	12
GP3051SAEBBD	51,60	240	2200	G 3/4"	G 3/4"	12,5
GP3061SAEBBD	61,80	220	1800	G 1"	G 1"	13
GP3067SAEBBD	67,40	220	1800	G 1"	G 1"	13
GP3073SAEBBD	73,10	210	1600	G 1"	G 1"	13,5
GP3082SAEBBD	82,05	200	1500	G 1"	G 1"	14,7
GP3092SAEBBD	92,10	200	1500	G 1"	G 1"	14,8
GP30100SAEBBD	100,20	180	1500	G 1 1/4"	G 1 1/4"	15
GP30125SAEBBD	125,60	160	1500	G 1 1/4"	G 1 1/4"	15,3

30 SERIES ISO TRC LEFT AND RIGHT GEAR PUMP						
Product Number Ürün Numarası	Displacement İletim Hacmi (cm /rev at 1000 rpm)	Max. Pressure Maks.Basınç (bar)	Max.Speed Maks. Hız	Inlet Giriş	Outlet Çıkış	Weight Ağırlık (Kg.)
GP3014ISOTRCLR	14	300	2700	G 1/2"	G 1/2"	11
GP3017ISOTRCLR	17,20	300	2700	G 1/2"	G 1/2"	11,5
GP3022ISOTRCLR	22,10	300	2700	G 1/2"	G 1/2"	12
GP3027ISOTRCLR	27,05	300	2700	G 1/2"	G 1/2"	12,5
GP3034ISOTRCLR	34,30	285	2400	G 3/4"	G 3/4"	12,8
GP3038ISOTRCLR	38,10	285	2200	G 3/4"	G 3/4"	13
GP3043ISOTRCLR	43,20	270	2200	G 3/4"	G 3/4"	13,3
GP3051ISOTRCLR	51,60	240	2200	G 3/4"	G 3/4"	13,5
GP3061ISOTRCLR	61,80	220	1800	G 1"	G 1"	14
GP3067ISOTRCLR	67,40	220	1800	G 1"	G 1"	14,2
GP3073ISOTRCLR	73,10	210	1600	G 1"	G 1"	14,5
GP3082ISOTRCLR	82,05	200	1500	G 1"	G 1"	14,7
GP3092ISOTRCLR	92,10	200	1500	G 1"	G 1"	14,8
GP30100ISOTRCLR	100,20	180	1500	G 1 1/4"	G 1 1/4"	15
GP30125ISOTRCLR	125,60	160	1500	G 1 1/4"	G 1 1/4"	15,3



30 SERIES ISO TRC BI-DIRECTIONAL GEAR PUMP						
Product Number Ürün Numarası	Displacement İletim Hacmi (cm /rev at 1000 rpm)	Max. Pressure Maks.Basınç (bar)	Max.Speed Maks. Hız	Inlet Giriş	Outlet Çıkış	Weight Ağırlık (Kg.)
GP3014ISOTRCBD	14	300	2700	G 1/2"	G 1/2"	11
GP3017ISOTRCBD	17,20	300	2700	G 1/2"	G 1/2"	11,5
GP3022ISOTRCBD	22,10	300	2700	G 1/2"	G 1/2"	12
GP3027ISOTRCBD	27,05	300	2700	G 1/2"	G 1/2"	12,5
GP3034ISOTRCBD	34,30	285	2400	G 3/4"	G 3/4"	12,8
GP3038ISOTRCBD	38,10	285	2200	G 3/4"	G 3/4"	13
GP3043ISOTRCBD	43,20	270	2200	G 3/4"	G 3/4"	13,3
GP3051ISOTRCBD	51,60	240	2200	G 3/4"	G 3/4"	13,5
GP3061ISOTRCBD	61,80	220	1800	G 1"	G 1"	14
GP3067ISOTRCBD	67,40	220	1800	G 1"	G 1"	14,2
GP3073ISOTRCBD	73,10	210	1600	G 1"	G 1"	14,5
GP3082ISOTRCBD	82,05	200	1500	G 1"	G 1"	14,7
GP3092ISOTRCBD	92,10	200	1500	G 1"	G 1"	14,8
GP30100ISOTRCBD	100,20	180	1500	G 1 1/4"	G 1 1/4"	15
GP30125ISOTRCBD	125,60	160	1500	G 1 1/4"	G 1 1/4"	15,3





35 SERIES ISO LEFT AND RIGH GEAR PUMP							
Product Number Ürün Numarası	Displacement İletim Hacmi (cm /rev at 1000 rpm)	Max. Pressure Maks.Basınç (bar)	Max.Speed Maks. Hız	Inlet Giriş	Outlet Çıkış	Weight Ağırlık (Kg.)	
GP3560ISOLR	60,10	260	1800	G1"	G1"	17,1	
GP3573ISOLR	73,10	255	1800	G1 1/4"	G1"	17,5	
GP3590ISOLR	90,05	250	1800	G1 1/4"	G1"	18,1	
GP35100ISOLR	100,30	240	1800	G1 1/4"	G1"	18,4	
GP35110ISOLR	110,10	230	1800	G1 1/4"	G1"	18,7	
GP35125ISOLR	125,20	220	1800	G1 1/4"	G1"	19,1	


35 SERIES UNI LEFT AND RIGH GEAR PUMP							
Product Number Ürün Numarası	Displacement İletim Hacmi (cm /rev at 1000 rpm)	Max. Pressure Maks.Basınç (bar)	Max.Speed Maks. Hız	Inlet Giriş	Outlet Çıkış	Weight Ağırlık (Kg.)	
GP3560UNILR	60,10	260	1800	G1"	G1"	16,1	
GP3573UNILR	73,10	255	1800	G1 1/4"	G1"	16,5	
GP3590UNILR	90,05	250	1800	G1 1/4"	G1"	17,1	
GP35100UNILR	100,30	240	1800	G1 1/4"	G1"	17,4	
GP35110UNILR	110,10	230	1800	G1 1/4"	G1"	17,7	
GP35125UNILR	125,20	220	1800	G1 1/4"	G1"	18,1	


35 SERIES ISO BI-DIRECTIONAL GEAR PUMP							
Product Number Ürün Numarası	Displacement İletim Hacmi (cm /rev at 1000 rpm)	Max. Pressure Maks.Basınç (bar)	Max.Speed Maks. Hız	Inlet Giriş	Outlet Çıkış	Weight Ağırlık (Kg.)	
GP3560ISOBD	60,10	260	1800	G1"	G1"	17,1	
GP3573ISOBD	73,10	255	1800	G1 1/4"	G1 1/4"	17,5	
GP3590ISOBD	90,05	250	1800	G1 1/4"	G1 1/4"	18,1	
GP35100ISOBD	100,30	240	1800	G1 1/4"	G1 1/4"	18,4	
GP35110ISOBD	110,10	230	1800	G1 1/4"	G1 1/4"	18,7	
GP35125ISOBD	125,20	220	1800	G1 1/4"	G1 1/4"	19,1	

35 SERIES UNI BI-DIRECTIONAL GEAR PUMP							
Product Number Ürün Numarası	Displacement İletim Hacmi (cm /rev at 1000 rpm)	Max. Pressure Maks.Basınç (bar)	Max.Speed Maks. Hız	Inlet Giriş	Outlet Çıkış	Weight Ağırlık (Kg.)	
GP3560UNIBD	60,10	260	1800	G1"	G1"	16,1	
GP3573UNIBD	73,10	255	1800	G1 1/4"	G1 1/4"	16,5	
GP3590UNIBD	90,05	250	1800	G1 1/4"	G1 1/4"	17,1	
GP35100UNIBD	100,30	240	1800	G1 1/4"	G1 1/4"	17,4	
GP35110UNIBD	110,10	230	1800	G1 1/4"	G1 1/4"	17,7	
GP35125UNIBD	125,20	220	1800	G1 1/4"	G1 1/4"	18,1	

	40 SERIES ISO LEFT AND RIGHT GEAR PUMP						
	Product Number Ürün Numarası	Displacement İletim Hacmi (cm /rev at 1000 rpm)	Max. Pressure Maks.Basınç (bar)	Max.Speed Maks. Hız	Inlet Giriş	Outlet Çıkış	Weight Ağırlık (Kg.)
	GP4063ISOLR	63,10	285	1800	G1"	G 3/4"	19,2
	GP4073ISOLR	73,05	280	1800	G1 1/4"	G1"	19,5
	GP4087ISOLR	87,30	270	1800	G1 1/4"	G1"	20,2
	GP40100ISOLR	100,10	265	1800	G1 1/4"	G1"	21,1
	GP40109ISOLR	109,20	260	1800	G1 1/4"	G1"	22,3
	GP40133ISOLR	133,60	240	1500	G1 1/2"	G1"	23,2
	GP40151ISOLR	151,80	210	1500	G1 1/2"	G1"	24,1

	40 SERIES UNI LEFT AND RIGHT GEAR PUMP						
	Product Number Ürün Numarası	Displacement İletim Hacmi (cm /rev at 1000 rpm)	Max. Pressure Maks.Basınç (bar)	Max.Speed Maks. Hız	Inlet Giriş	Outlet Çıkış	Weight Ağırlık (Kg.)
	GP4063UNILR	63,10	285	1800	G1"	G 3/4"	18,2
	GP4073UNILR	73,05	280	1800	G1 1/4"	G1"	18,5
	GP4087UNILR	87,30	270	1800	G1 1/4"	G1"	19,2
	GP40100UNILR	100,10	265	1800	G1 1/4"	G1"	20,1
	GP40109UNILR	109,20	260	1800	G1 1/4"	G1"	21,3
	GP40133UNILR	133,60	240	1500	G1 1/2"	G1"	22,2
	GP40151UNILR	151,80	210	1500	G1 1/2"	G1"	23,1

	40 SERIES ISO ASAE LEFT AND RIGHT GEAR PUMP						
	Product Number Ürün Numarası	Displacement İletim Hacmi (cm /rev at 1000 rpm)	Max. Pressure Maks.Basınç (bar)	Max.Speed Maks. Hız	Inlet Giriş	Outlet Çıkış	Weight Ağırlık (Kg.)
	GP4063ISOASAELR	63,10	285	1800	G1"	G 3/4"	19,2
	GP4073ISOASAELR	73,05	280	1800	G1 1/4"	G1"	19,5
	GP4087ISOASAELR	87,30	270	1800	G1 1/4"	G1"	20,2
	GP40100ISOASAELR	100,10	265	1800	G1 1/4"	G1"	21,1
	GP40109ISOASAELR	109,20	260	1800	G1 1/4"	G1"	22,3
	GP40133ISOASAELR	133,60	240	1500	G1 1/2"	G1"	23,2
	GP40151ISOASAELR	151,80	210	1500	G1 1/2"	G1"	24,1

	40 SERIES ISO TANDEM LEFT AND RIGHT GEAR PUMP						
	Product Number Ürün Numarası	Displacement İletim Hacmi (cm /rev at 1000 rpm)	Max. Pressure Maks.Basınç (bar)	Max.Speed Maks. Hız	Inlet Giriş	Outlet Çıkış	Weight Ağırlık (Kg.)
	GP4063ISOTANLR	63,10	285	1800	G1"	G 3/4"	20,2
	GP4073ISOTANLR	73,05	280	1800	G1 1/4"	G1"	20,5
	GP4087ISOTANLR	87,30	270	1800	G1 1/4"	G1"	21,2
	GP40100ISOTANLR	100,10	265	1800	G1 1/4"	G1"	22,1
	GP40109ISOTANLR	109,20	260	1800	G1 1/4"	G1"	23,3
	GP40133ISOTANLR	133,60	240	1500	G1 1/2"	G1"	24,2
	GP40151ISOTANLR	151,80	210	1500	G1 1/2"	G1"	25,1



40 SERIES UNI TANDEM LEFT AND RIGHT GEAR PUMP						
Product Number Ürün Numarası	Displacement İletim Hacmi (cm /rev at 1000 rpm)	Max. Pressure Maks.Basınç (bar)	Max.Speed Maks. Hız	Inlet Giriş	Outlet Çıkış	Weight Ağırlık (Kg.)
GP4063UNITANLR	63,10	285	1800	G1"	G 3/4"	19,2
GP4073UNITANLR	73,05	280	1800	G1 1/4"	G1"	19,5
GP4087UNITANLR	87,30	270	1800	G1 1/4"	G1"	20,2
GP40100UNITANLR	100,10	265	1800	G1 1/4"	G1"	21,1
GP40109UNITANLR	109,20	260	1800	G1 1/4"	G1"	22,3
GP40133UNITANLR	133,60	240	1500	G1 1/2"	G1"	23,2
GP40151UNITANLR	151,80	210	1500	G1 1/2"	G1"	24,1

40 SERIES ISO ASAE TANDEM LEFT AND RIGHT GEAR PUMP						
Product Number Ürün Numarası	Displacement İletim Hacmi (cm /rev at 1000 rpm)	Max. Pressure Maks.Basınç (bar)	Max.Speed Maks. Hız	Inlet Giriş	Outlet Çıkış	Weight Ağırlık (Kg.)
GP4063ISOASAETANLR	63,10	285	1800	G1"	G 3/4"	20,2
GP4073ISOASAETANLR	73,05	280	1800	G1 1/4"	G1"	20,5
GP4087ISOASAETANLR	87,30	270	1800	G1 1/4"	G1"	21,2
GP40100ISOASAETANLR	100,10	265	1800	G1 1/4"	G1"	22,1
GP40109ISOASAETANLR	109,20	260	1800	G1 1/4"	G1"	23,3
GP40133ISOASAETANLR	133,60	240	1500	G1 1/2"	G1"	24,2
GP40151ISOASAETANLR	151,80	210	1500	G1 1/2"	G1"	25,1

PISTON PUMP SAEB BI-DIRECTIONAL						
Product Number Ürün Numarası	Displacement İletim Hacmi (cm /rev at 1000 rpm)	Max. Pressure Maks.Basınç (bar)	Max.Speed Maks. Hız	Inlet Giriş	Outlet Çıkış	Weight Ağırlık (Kg.)
APP20SAEBBD	20,10	350	1800	G1 1/4"	G1"	14,1
APP26SAEBBD	26,05	350	1800	G1 1/4"	G1"	14,1
APP34SAEBBD	34,30	350	1800	G1 1/4"	G1"	14,1
APP42SAEBBD	42,10	350	1800	G1 1/4"	G1"	14,1
APP46SAEBBD	46,20	350	1800	G1 1/4"	G1"	14,1
APP52SAEBBD	52,60	350	1800	G1 1/4"	G1"	14,1
APP55SAEBBD	55,80	300	1500	G1 1/4"	G1"	14,1
APP60SAEBBD	60,80	300	1500	G1 1/4"	G1"	14,1

PISTON PUMP ISOTWIN BI-DIRECTIONAL						
Product Number Ürün Numarası	Displacement İletim Hacmi (cm /rev at 1000 rpm)	Max. Pressure Maks.Basınç (bar)	Max.Speed Maks. Hız	Inlet Giriş	Outlet Çıkış	Weight Ağırlık (Kg.)
APP20ISOTWBD	20,10	350	1800	G1 1/4"	G1"	14,1
APP26ISOTWBD	26,05	350	1800	G1 1/4"	G1"	14,1
APP34ISOTWBD	34,30	350	1800	G1 1/4"	G1"	14,1
APP42ISOTWBD	42,10	350	1800	G1 1/4"	G1"	14,1
APP46ISOTWBD	46,20	350	1800	G1 1/4"	G1"	14,1
APP52ISOTWBD	52,60	350	1800	G1 1/4"	G1"	14,1
APP55ISOTWBD	55,80	300	1500	G1 1/4"	G1"	14,1
APP60ISOTWBD	60,80	300	1500	G1 1/4"	G1"	14,1

PISTON PUMP ISO BI-DIRECTIONAL						
Product Number Ürün Numarası	Displacement İletim Hacmi (cm /rev at 1000 rpm)	Max. Pressure Maks.Basınç (bar)	Max.Speed Maks. Hız	Inlet Giriş	Outlet Çıkış	Weight Ağırlık (Kg.)
APP20ISOBD	20,10	350	1800	G1 1/4"	G1"	14,1
APP26ISOBD	26,05	350	1800	G1 1/4"	G1"	14,1
APP34ISOBD	34,30	350	1800	G1 1/4"	G1"	14,1
APP42ISOBD	42,10	350	1800	G1 1/4"	G1"	14,1
APP46ISOBD	46,20	350	1800	G1 1/4"	G1"	14,1
APP52ISOBD	52,60	350	1800	G1" 1/4	G1"	14,1
APP55ISOBD	55,80	300	1500	G1" 1/4	G1"	14,1
APP60ISOBD	60,80	300	1500	G1" 1/4	G1"	14,1

PISTON PUMP UNI BI-DIRECTIONAL						
Product Number Ürün Numarası	Displacement İletim Hacmi (cm /rev at 1000 rpm)	Max. Pressure Maks.Basınç (bar)	Max.Speed Maks. Hız	Inlet Giriş	Outlet Çıkış	Weight Ağırlık (Kg.)
APP20UNIBD	20,10	350	1800	G1 1/4"	G1"	14,1
APP26UNIBD	26,05	350	1800	G1 1/4"	G1"	14,1
APP34UNIBD	34,30	350	1800	G1 1/4"	G1"	14,1
APP42UNIBD	42,10	350	1800	G1 1/4"	G1"	14,1
APP46UNIBD	46,20	350	1800	G1 1/4"	G1"	14,1
APP52UNIBD	52,60	350	1800	G1 1/4"	G1"	14,1
APP55UNIBD	55,80	300	1500	G1 1/4"	G1"	14,1
APP60UNIBD	60,80	300	1500	G1 1/4"	G1"	14,1

PISTON PUMP ISO BI-DIRECTIONAL						
Product Number Ürün Numarası	Displacement İletim Hacmi (cm /rev at 1000 rpm)	Max. Pressure Maks.Basınç (bar)	Max.Speed Maks. Hız	Inlet Giriş	Outlet Çıkış	Weight Ağırlık (Kg.)
APP62ISOBD	62,10	350	1800	G1 1/2"	G1"	14,1
APP70ISOBD	70,05	350	1800	G1 1/2"	G1"	14,1
APP80ISOBD	80,30	350	1800	G1 1/2"	G1"	14,1
APP90ISOBD	90,10	350	1800	G1 1/2"	G1"	14,1
APP100ISOBD	100,20	350	1800	G1 1/2"	G1"	14,1
APP110ISOBD	110,60	350	1800	G1 1/2"	G1"	14,1

BENT AXIS PISTON PUMP ISO BI-DIRECTIONAL						
Product Number Ürün Numarası	Displacement İletim Hacmi (cm /rev at 1000 rpm)	Max. Pressure Maks.Basınç (bar)	Max.Speed Maks. Hız	Inlet Giriş	Outlet Çıkış	Weight Ağırlık (Kg.)
BENT22ISOBD	22,10	350	2900	G1 3/4"	G1 1/2"	14,1
BENT33ISOBD	33,05	350	2900	G1 3/4"	G1 1/2"	14,1
BENT45ISOBD	45,30	350	2250	G1"	G1 3/4"	14,1
BENT56ISOBD	56,10	350	2250	G1"	G1 3/4"	14,1
BENT63ISOBD	63,20	350	2250	G1"	G1 3/4"	14,1
BENT80ISOBD	80,60	350	2150	G1 1/4"	G1"	14,1
BENT107ISOBD	107,60	350	1800	G1 1/4"	G1"	14,1
BENT125ISOBD	125,60	300	1800	G1 1/4"	G1"	14,1

# Complete Product Range

## Piston Pumps

## Piston Motors

# DIN

DIN 5462 / ISO 14  
8x32x35  
8x32x36  
DIN 6885



**A8PD**



**A9MD**

# ISO

ISO 3019-2 (4 BOLTS)  
DIN 5480 -W25,30,35,40,45  
DIN 6885 -Ø20,25,30,35,40,45



**A8PO**



**A9MO**

# SAE

SAE B2 C4 - SAE D  
SAE J498b  
SAE J 744



**A8PS**



**A9MS**

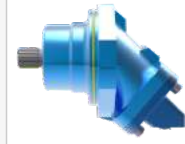
# M2

Fixed Plug-in

DIN 5480 / ISO 3019-2  
W30 - W35 - W40  
M21 - M22 - M23



**A8PL - Dual Flow**



**A9MF - Semi integrated**

# A4

DIN ISO 14  
8x32x36



**A4PP Single Flow**



**A4PL Dual Flow**

# A6

P2 Connection M8x125  
Woodruff key 3x6,5 NF E  
27-653 NF R 124-04  
(2 BOLTS)



**A6HP - High Pressure**



**A7GP - Gear Pump  
A7GM - Gear Motor**

# Contact



Gold Hydraulics, Ltd.

2019® Catalogue

All pictures and banners are patented by owner.

[www.goldhydraulics.com](http://www.goldhydraulics.com)

For more details and other catalogs,  
please send email to our team.

Hydraulic Bent Axis Piston Pumps  
Bent Axis Motors  
Dual Flow Piston Pumps and Gear Pumps...

Sales Team

[info@goldhydraulics.com](mailto:info@goldhydraulics.com)

Order

[order@goldhydraulics.com](mailto:order@goldhydraulics.com)

Management

[mail@goldhydraulics.com](mailto:mail@goldhydraulics.com)



[www.goldhydraulics.com](http://www.goldhydraulics.com)